

**THREE NEW RECORDS OF STOMATOPODA (CRUSTACEA)  
FROM THE SEAS AROUND INDIA**

By S. L. SHANBHOUE\*

*Central Marine Fisheries Research Institute, Cochin*

**INTRODUCTION**

OUR knowledge of stomatopods from the seas around India is fairly extensive. The monograph of Kemp (1913) is a landmark in the history of the group from the region. Subsequent contributions by Kemp and Chopra (1921), Chopra (1934), Chopra (1939) and Alikunhi (1967) have enriched our knowledge of the group. While making collections for a detailed study of the group, the following three species which are new records to the seas around India *Lysiosquilla tredecimdentata* Holthuis (Family Lysiosquillidae) and *Alima hyalina* Leach, and *Carinosquilla lirata* (Kemp and Chopra) (Family Squillidae) were collected. The diagnostic characters of each species and detailed measurements of some specimens are given. Attention is also drawn to differences observed from earlier descriptions. Data on the total length (TL) measured from the tip of the rostrum to the tip of the submedian spines of the telson; the carapace length (CL) exclusive of rostrum; the abdominal width measured at the 5th somite and the corneal index (CI) obtained by dividing the carapace length by the corneal width and multiplying it by 100 are given.

***Lysiosquilla tredecimdentata* Holthuis, 1941**

(Pl. I, Figs. 1 and 2)

*Lysiosquilla maculata* var. *tredecimdentata* Holthuis, 1941, p. 273, fig. 6.

*Lysiosquilla tredecimdentata* Manning, 1968, p. 38, fig. 13; Shanbhogue, 1969, p. 36.

**Material:** 1 Male, TL 275, CL 48, Vizhingam (south-west coast of India); 1 Male, TL 253, CL 44, Pamban (Gulf of Mannar), Dec. 1966; 1 Male, TL 199, CL 34, Mandapam (Gulf of Mannar), April 1967; 1 Male, TL 159, CL 26.5, Cochin, May 1968; 1 Female, CL 27.5, Tuticorin, Nov. 1966; 2 Females and 1 Male, Calicut, June 1965; 1 Female, Mandapam, 8-1-1967.

Measurements (mm.) of a male and a female specimen from Calicut are given below:

|                      | <i>Female</i> | <i>Male</i> |
|----------------------|---------------|-------------|
| TL                   | 129.0         | 134.5       |
| CL                   | 22.1          | 27.5        |
| CI                   | 325           | 387         |
| Rostral plate length | 4.5           | 4.9         |

\* Present address : Fisheries College, Mangalore.

|                       | <i>Female</i> | <i>Male</i> |
|-----------------------|---------------|-------------|
| Rostral plate width   | 6.0           | 6.5         |
| Antennal scale length | 13.5          | 13.8        |
| Antennal scale width  | 4.0           | 3.5         |
| Telson length         | 18.0          | 18.0        |
| Telson width          | 26.0          | 26.8        |

The major diagnostic characters of the species are slender antennal scale, outlined in dark pigment, the anterior projection on the basal portion of the antenna, the absence of dark bands on the claw; the deflexed spine on the carpus of the claw, the triangular keel on the 8th thoracic somite and the unarmed ventral surface of the uropodal protopod.

*Remarks:* The specimens generally agree with the description given by Holthuis (1941). However, according to him the tip of rostrum does not extend to the dorsal process of the ophthalmic segment, but in the present specimens it was found that the tip extends nearly to the base or up to the middle or even beyond the tip of dorsal process. He reported 13 teeth on the raptorial dactylus but 10-11 are present in the above material. Manning (1968) re-described the species and recorded that the antennal peduncle did not extend beyond the eyes. However, in the present specimens it extends slightly beyond or sometimes very much beyond the eyes. In other characters the specimens agree well with Manning's re-description of the species.

It would appear that the species is not rare along the coasts of India. Before the final word can be said, there is need for a re-examination of material at present placed under *L. maculata* (Fabricius) in the various natural history museums.

*Distribution:* Aden and Madagascar. For the first time the species is reported here from the Indian seas.

#### *Alima hyalina* Leach, 1818

(Pl. I, Fig. 3)

*Alima hyalina* Leach, 1818, p. 416; Manning, 1962, pp. 496-507, figs. 1-4; Manning, 1968, p. 136; Shanbhogue, 1969, p. 35.

*Squilla alba* Bigelow, 1894, p. 539, pl. xxii; Townsley, 1953, p. 408, figs. 6-7a-f; Ingle, 1958, p. 49, figs. 1-6.

*Squilla hieroglyphica* Barnard, 1950, p. 846, fig. 2c-e.

*Material:* Two specimens from Minicoy with the following measurements (mm.):

|                    | <i>Male</i> | <i>Female</i> |
|--------------------|-------------|---------------|
| Date of collection | Jan. 1967   | 2-12-1967     |
| TL                 | 33.0        | 38.0          |
| CL                 | 7.5         | 8.2           |
| CI                 | 341         | 316           |
| Length of telson   | 5.0         | 5.5           |
| Breadth of telson  | 5.5         | 6.0           |
| Abdominal width    | 6.5         | 7.0           |

The major diagnostic characters of the species are : lateral process of fifth thoracic somite bilobed ; lateral processes of sixth and seventh thoracic somites not bilobed ; median carina without anterior bifurcation and raptorial dactylus with six teeth.

*Remarks :* The species is rare and known hitherto from 7 specimens from the world oceans. Only female specimens of this species were known (the sex of the juvenile specimen reported by Manning in 1962 is not known) and for the first time a male specimen is recorded. This is a new distributional record for Indian Seas as it has upto now not been reported east of the South African Coast.

The specimens agree well with the descriptions given by Bigelow (1894) and Ingle (1958). There is a tendency for the corneal index to decrease with age. The types of this species were collected at Bimini Harbour, Bahamas by Bigelow (1894). Subsequently Edmondson (1921) and Townsley (1953) recorded it from Hawaii and Barnard (1950) from South Africa (as *Squilla hieroglyphica*). Ingle (1958) examined a specimen from St. Helena and also re-examined the specimen collected by Barnard. The specimen reported from Hawaii by Townsley (1953) exhibited some interesting features such as truncate or triangular rostrum, cornea set transversely and only slightly broader than the greatest breadth of the stalk and the telson with indistinct median carina. These differences were attributed to the fact that his specimen was in the last post-larval stage. In the present material the rostrum is short and broad with the greatest breadth at the base and with the lateral margins converging to a rounded apex. The cornea is very much broader than the stalk and somewhat obliquely situated ; and the telson has a prominent elevated median carina. *A. hyalina* shows affinities to *A. hieroglyphica* (Kemp) in some characters, while Ingle (1958) reported that the closest relative of *Squilla alba* (= *A. hyalina*) is *Squilla hildebrandi* Schmitt (1940).

#### *Carinosquilla lirata* (Kemp and Chopra, 1921)

(Pl. I, Fig. 4)

*Squilla lirata* Kemp and Chopra, 1921, pp. 303-307, text-figs. 3, 4 ; Chopra, 1934, pp. 38, 39 ; Tweedie, 1934, pp. 39-40.

*Carinosquilla lirata* Manning, 1968, p. 135 ; Shanbhogue, 1969, p. 35.

*Material :* One male specimen collected at Royapuram, Madras, from shrimp trawl catches on 5-10-1968. The measurements (mm.) are TL 77, CL 16.5, CI 412, length of telson 13, breadth of telson 13.2 and abdominal width 16.

The diagnostic characters of the species are : lateral process of 5th, 6th and 7th thoracic somites bilobed ; eye large, stalk not inflated, cornea broader than stalk ; carapace and abdomen with numerous longitudinal carinae and mandibular palp absent.

*Remarks :* The specimen agrees with the description given by Kemp and Chopra (1921). The dusky patch of colour visible on the second abdominal somite is not seen in the present specimen. There are 5 carinae between the submedian carinae of the first and second abdominal somites of which two are short and are situated near the posterior margin of the somite. The differences between this species and

its close relative *C. multicarinata* (White) have been enumerated by Kemp and Chopra (1921),

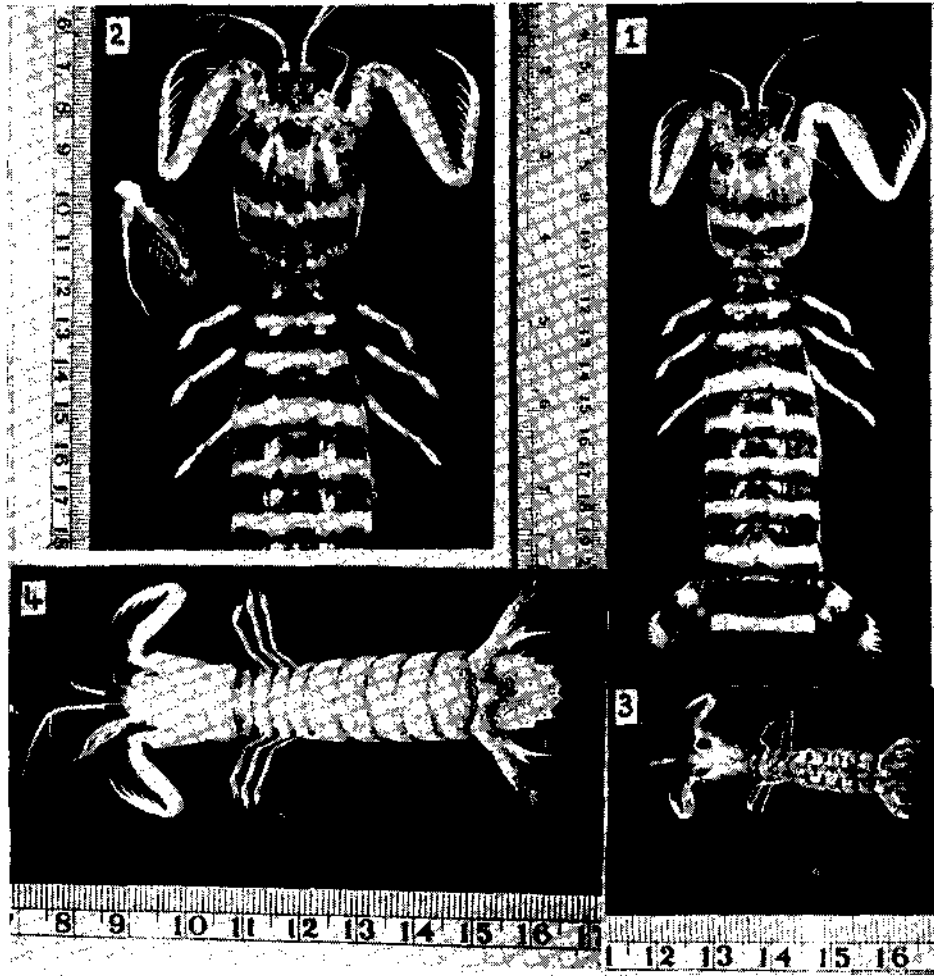
This is a new record for Indian seas and the first record from outside the type locality (Singapore).

#### ACKNOWLEDGEMENTS

I am very grateful to Dr. S. Jones, former Director of Central Marine Fisheries Research Institute, Mandapam Camp, for his encouragement and guidance during the course of this study. I wish to express my sincere thanks to Dr. M. J. George, Indian Ocean Biological Centre, Cochin, for critically going through the manuscript and am thankful to my former colleagues in C.M.F.R. Institute for assisting me in the collections. I wish to also thank the Ministry of Education, Government of India, for the award of a Senior Research Training Scholarship during the tenure of which these observations were made.

#### REFERENCES

- ALIKUNHI, K. H. 1967. An account of the post-larval development, moulting, and growth of the common stomatopods of the Madras coast. *Proc. Symposium on Crustacea—II*: 824-945, text-figs. 1-194; Pl. I-III.
- BARNARD, K. H. 1950. Descriptive list of South African stomatopod Crustacea (mantis shrimps). *Ann. South African Mus.*, 38: 838-864; text-figs. 1-4.
- BIGELOW, R. P. 1894. Report on the Crustacea of the Order Stomatopoda collected by the steamer 'Albatross' between 1885 and 1891 and on other specimens in the U.S. National Museum. *Proc. U.S. Nat. Mus.*, 17: 489-550, text-figs. 1-28, pls. 20-22.
- CHOPRA, B. 1934. On the stomatopod Crustacea collected by the Bengal Pilot Service off the mouth of the River Hughli, together with notes on some other forms. *Rec. Indian Mus.*, 36: 17-43, text-figs. 1-5.
- . 1939. Stomatopoda in: *Sci. Rep. John Murray Exped.* 6: 137-181, 13 figs.
- EDMONDSON, C. H. 1921. Stomatopoda in the Bernice P. Bishop Museum. *Bernice P. Bishop Mus., Occas. Papers* 7(13): 281-302.
- HOLTHUIS, L. B. 1941. The Stomatopoda of the Snellius Expedition. Biological Results of the Snellius Expedition, XII. *Temminckia*, 6: 241-294, text-figs. 1-9.
- INGLE, R. W. 1958. On *Squilla alba* Bigelow, a rare stomatopod crustacean new to St. Helena and South Africa. *Ann. Mag. nat. Hist.*, (13)1(1): 49-56, figs. 1-6.
- KEMP, S. 1913. An account of the Crustacea Stomatopoda of the Indo-Pacific region based on the collection in the Indian Museum. *Mem. Indian Mus.*, 4(1): 1-217, 10 text-figs., pls. 1-10.
- KEMP, S. AND CHOPRA, B. 1921. Notes on Stomatopoda. *Rec. Indian Mus.*, 22: 297-311, text-figs. 1-4.
- LEACH, W. E. 1817-1818. A general notice of the animals taken by Mr. John Cranch, during the expedition to explore the source of the River Zaire. In: Tuckey, J. K., Narrative of an expedition to explore the River Zaire, usually called the Congo, in South Africa, in 1816, John Murray, London, pp. 407-419 (1818), unnumb. pl. (1817).
- MANNING, RAYMOND, B. 1962. *Alima hyalina* Leach, the pelagic larva of the stomatopod crustacean *Squilla alba* Bigelow. *Bull. Mar. Sci. Gulf & Carib.*, 12(3): 496-507, figs. 1-4.



FIGS. (1) *Lysiosquilla tredecimdentata* Holthuis, Male ; Cochin ; TL 159 mm. ; CL 26.5.  
 (2) anterior region ; antenna of another specimen. (3) *Alima hyalina* Leach, Female ; Minicoy ;  
 TL 38 ; CL 8.2 ; and (4) *Carinosquilla lirata* (Kemp and Chopra), Male ; Madras ; TL 77 ; CL 16.5.

- MANNING, RAYMOND, B. 1968. Stomatopod Crustacea from Madagascar. *Proc. U.S. Nat. Mus.*, 124; No. 3641 : 1-61.
- . 1968. A revision of the family Squillidae (Crustacea, Stomatopoda), with the description of eight new genera. *Bull. Mar. Sci.*, 18(1) : 105-142.
- SCHMITT, W. L. 1940. The stomatopods of the west coast of America, based on collections made by the Allan Hancock Expeditions, 1933-38. *Allan Hancock Pacific Exped.*, 5(4) : 129-255, text-figs. 1-33.
- SHANBHOUE, S. L. 1969. Catalogue of stomatopods in the reference collections of the Central Marine Fisheries Research Institute. *Bull. Cent. mar. Fish. Res. Inst.*, No. 9, pp. 35 and 36.
- TOWNSLEY, SIDNEY, J. 1953. Adult and larval stomatopods occurring in Hawaiian waters. *Pacif. Sci.*, 7(4) : 399-437, text-figs. 1-28.
- TWEEDIE, M. W. F. 1934. Notes on Stomatopoda in the Raffles Museum. *Bull. Raffles Mus.*, Singapore, No. 9, pp. 33-41.